

# 212fw-37 Bruna Beret



## Suggested yarn:

- Pierrot Yarns Bruna [49% acrylic, 43% wool, 8% viscose; 60 yds/55m per 1.76 oz./50g skein];
  - ladies' size: color #11 black navy, 3 skeins [110g]
  - children's size: color #11 black navy, 2 skeins [90g]

## Tools/Notions:

- ladies' size: 5.7mm (approx. US 9) and 7.0mm (approx. US 10½ or 11) double-pointed knitting needles or sizes necessary to achieve gauge
- children's size: 5.1mm (approx. US 8) and 5.7mm (approx. US 9) double-pointed knitting needles or sizes necessary to achieve gauge

## Finished measurements:

- |                                  |                                  |
|----------------------------------|----------------------------------|
| • ladies' size:                  | • children's size                |
| • head circumference 50cm/19.69" | • head circumference 45cm/17.72" |
| • length 28cm/11.02"             | • length 23cm/9.06"              |

## Gauge (10cm/4" square):

- adult size: stockinette stitch (7.0mm needles): 10.5 sts and 15.5 rows
- child size: stockinette stitch (5.7mm needles): 14 sts and 20 rows

*Gauge may vary according to individual knitting style. Change needle size if necessary to achieve gauge. Alternatively, rework pattern with your own gauge measurements.*

## Knitting Tips

**Beret:** Ladies' size: cast on with 5.7mm needles and work k1p1 ribbing. Continue in stockinette stitch with 7.0mm needles. Children's size: cast on with 5.1mm needles and work k1p1 ribbing. Continue in stockinette stitch with 5.7mm needles.

For both sizes, cast on with long-tail cast-on method; work k1p1 ribbing in the round. Change needle size (see above); work in stockinette stitch in the round, decreasing as indicated. Thread yarn through remaining 12 stitches and cinch shut.

**Finishing:** To make pompom, wrap yarn 120 times around a piece of cardboard 10cm/4" wide. Fasten pompom to hat.

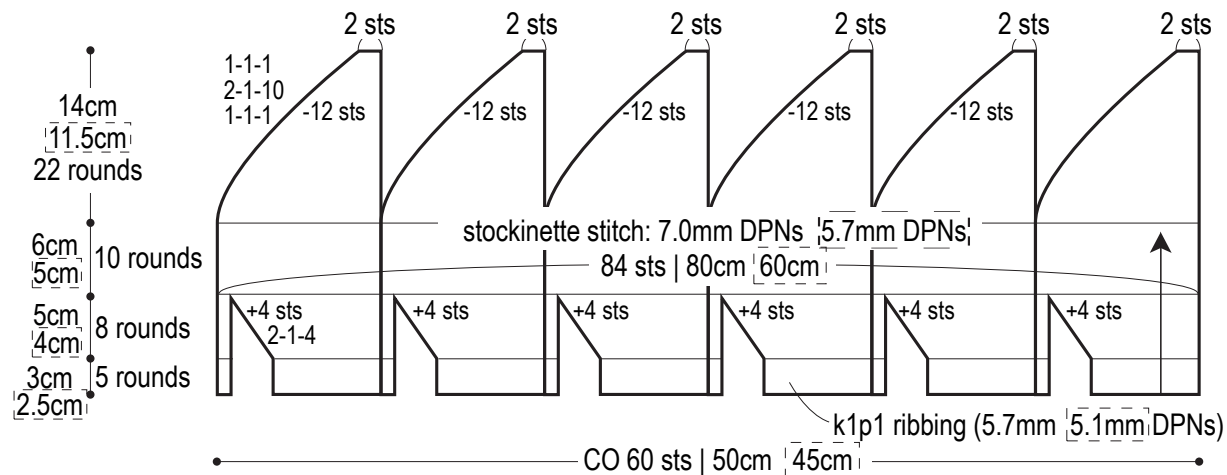
## Abbreviations:

CO = cast on

DPNs = double-pointed knitting needles

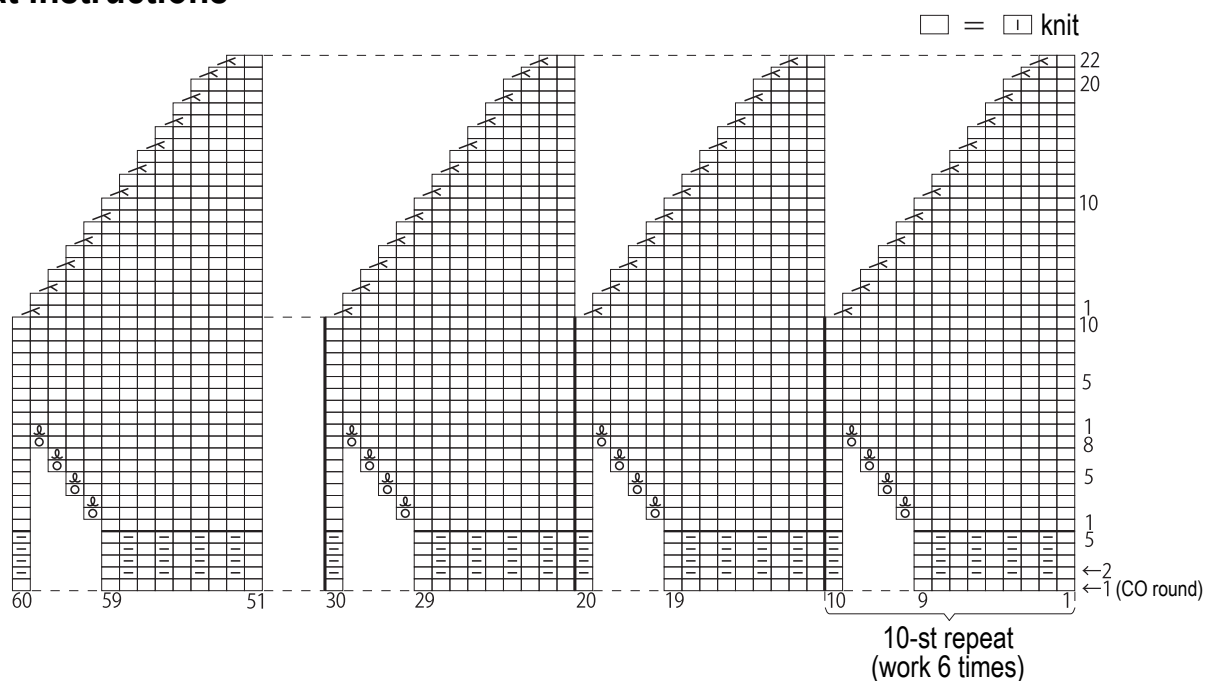
# # # = rounds-stitches-times (for example, 2-1-10 means "every 2 rounds, decrease 1 stitch; do this 10 times")

## Hat schematic

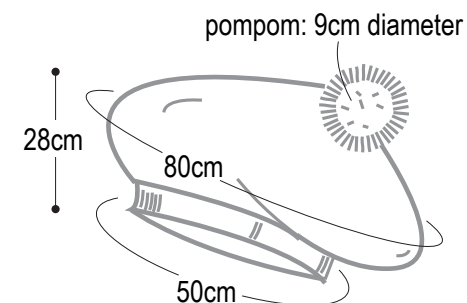


[ ] = children's size  
Otherwise, ladies' size or same for both sizes.

## Hat instructions

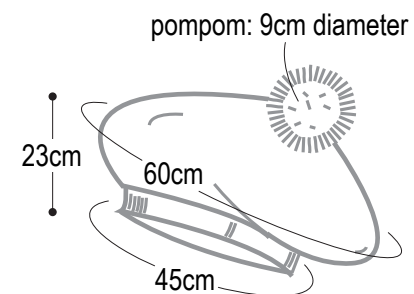


## Finishing: ladies' hat



※ Make pom-pom by wrapping yarn 120 times around a piece of cardboard 10cm wide.

## Finishing: children's hat



※ Make pom-pom by wrapping yarn 120 times around a piece of cardboard 10cm wide.